

# INDUSTRIAL PRESSURE TRANSMITTER

Swiss based Trafag is a leading international supplier of high quality sensors and monitoring instruments for measurement of pressure and temperature. The EPI pressure transmitter offers reliable and accurate pressure measurement over a wide temperature range. Its excellent long-term stability is based on the leading thin-film-on-steel sensor technology from Trafag. Its robust design makes the EPI the perfect choice for demanding industrial applications.



## Applications

- Machine tools
- Hydraulics
- HVAC
- Refrigeration
- Process technology
- Water treatment

## Features

- Different accuracy classes
- Compact design
- Good temperature resistance
- Completely welded steel sensor system without additional seals

## Technical Data

Measuring principle	Thin film on steel	Accuracy @ 25°C typ.	± 0.5 % FS typ
Measuring range	0 ... 2.5 to 0 ... 600 bar	Media temperature	-40°C ... 125°C
Output signal	4 ... 20 mA	Ambient temperature	-40°C ... 125°C

08/2016

Data sheet H72314d

Subject to change

## Ordering information/type code

				8297	XX	XX	XX	XX	XX
<b>Measuring range <sup>1)</sup></b>	<b>Pressure measurement range [bar]</b>	<b>Over pressure [bar]</b>	<b>Burst pressure [bar]</b>						
	0 ... 2.5	6	100	75					
	0 ... 4	10	100	76					
	0 ... 6	15	100	77					
	0 ... 10	20	200	78					
	0 ... 16	32	200	79					
	0 ... 25	80	300	80					
	0 ... 40	80	300	81					
	0 ... 60	200	500	82					
	0 ... 100	200	500	83					
	0 ... 160	500	1000	85					
	0 ... 250	500	1000	74					
	0 ... 400	800	1500	84					
	0 ... 600	1000	2000	86					
<b>Sensor</b>	Relative pressure, accuracy: 0.5%			25					
<b>Pressure connection</b>	G1/4" male (Seal)			17					
	R1/4" male			19					
	1/4" NPT male <sup>2)</sup>			30					
	1/2" NPT male <sup>2)</sup>			51					
<b>Electrical connection</b>	Male electrical plug: EN 175301-803-A (DIN43650-A), Mat.: PA			04					
<b>Output</b>	<b>Output</b>	<b>Load resistance</b>	<b>I (supply)</b>	<b>U (supply)</b>					
	4 ... 20mA	(U <sub>supply</sub> -9V) / 20mA		9 ... 32 VDC	19				
<b>Accessories</b>	Pressure peak damping element ø 0.3 mm			43					
	Special electrical connection: Pin 1 + , Pin 2 - (Only for output 4...20mA and male electrical plug EN175301-803-A / DIN43650-A)			92					

<sup>1)</sup> Extended overpressure as well as customized pressure ranges upon request

<sup>2)</sup> Please ask us



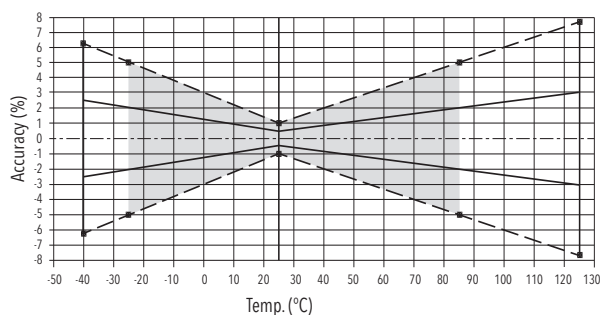
Sold in bulk of 50 pcs. only

## Standard products (extra short lead time)

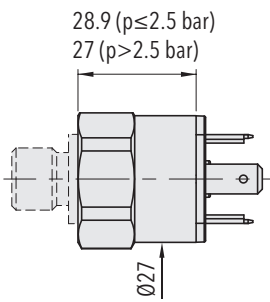
Product No.	Type Code	Pressure range [bar]	Over pressure max. [bar]	Signal output	Supply [VDC]
EPI4.0A	8297 76 2517 04 0000 0000 19 43 VM	0...4	10	4...20 mA	9...32
EPI6.0A	8297 77 2517 04 0000 0000 19 43 VM	0...6	15	4...20 mA	9...32
EPI10.0A	8297 78 2517 04 0000 0000 19 43 VM	0...10	20	4...20 mA	9...32
EPI16.0A	8297 79 2517 04 0000 0000 19 43 VM	0...16	32	4...20 mA	9...32
EPI25.0A	8297 80 2517 04 0000 0000 19 43 VM	0...25	80	4...20 mA	9...32
EPI40.0A	8297 81 2517 04 0000 0000 19 43 VM	0...40	80	4...20 mA	9...32
EPI60.0A	8297 82 2517 04 0000 0000 19 43 VM	0...60	200	4...20 mA	9...32
EPI100.0A	8297 83 2517 04 0000 0000 19 43 VM	0...100	200	4...20 mA	9...32
EPI250.0A	8297 74 2517 04 0000 0000 19 43 VM	0...250	500	4...20 mA	9...32
EPI400.0A	8297 84 2517 04 0000 0000 19 43 VM	0...400	800	4...20 mA	9...32

Specifications		
<b>Accuracy</b>	TEB typ. @ -25 ... +85°C	± 2.0 % FS typ.
	Accuracy @ 25°C typ.	± 0.5 % FS typ.
	NLH @ 25°C (BSL) typ.	± 0.2 % FS typ.
	TC zero point and span typ.	± 0.03 % FS/K typ.
	Long term stability 1 year typ.	± 0.2 % FS typ.
<b>Electrical Data</b>	Output / supply voltage	4 ... 20 mA: 24 (9 ... 32) VDC
	Rise time	Typ. 1 ms / 10 ... 90 % nominal pressure
<b>Environmental conditions</b>	Media temperature	-40°C ... +125°C
	Ambient temperature	-40°C ... +125°C
	Protection	IP65
	Humidity	Max. 95 % relative
	Vibration	15 g (20...2000 Hz)
	Shock	50 g/ 11 ms
<b>EMC Protection</b>	Emission	EN/IEC 61000-6-4
	Immunity	EN/IEC 61000-6-2
<b>Mechanical Data</b>	Sensor (wetted parts)	1.4542 (AISI630)
	Pressure connection (wetted parts)	1.4542 (AISI630)
	Housing	1.4301 (AISI304)
	Sealing	FKM 70 Sh
	Male electrical plug	See ordering information
	Weight	~ 80...110 g
	Mounting torque	25 Nm

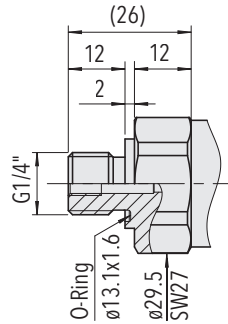
## Measuring accuracy 0.5%



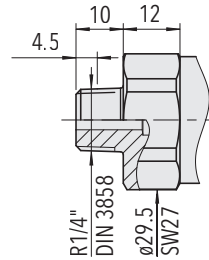
## Dimensions



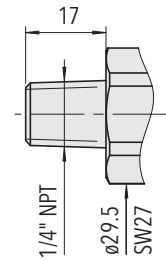
8297.XX.XXXX.04.XX.XX



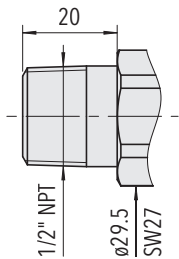
8297.XX.XX17.XX.XX.XX



8297.XX.XX19.XX.XX.XX



8297.XX.XX30.XX.XX.XX



8297.XX.XX51.XX.XX.XX

## Electrical connection

		Protection / electrical connection	
		IP65	
		Industrial standard EN175301-803A	
		<b>04</b>	
Output signal		Standard	with accessory <b>92</b>
	<b>8297.XX.XXXX.XX.19</b>	2 1 ⊕	1 2 ⊕

### Additional information

#### Documents

Data sheet	<a href="http://www.trafag.com/H72314">www.trafag.com/H72314</a>
Instructions	<a href="http://www.trafag.com/H73311">www.trafag.com/H73311</a>
Flyer	<a href="http://www.trafag.com/H70672">www.trafag.com/H70672</a>