

# EX PRESSURE TRANSMITTER

Swiss based Trafag is a leading international supplier of high quality sensors and monitoring instruments for measurement of pressure and temperature.



## Applications

- Shipbuilding
- Ex SEV 11 ATEX 0145 X



## Features

- Explosion-proof Ex ia IIC T3...T6
- Low pressure ranges (to 100 mbar)
- Versions with frontal flush diaphragm
- Media temperature to 150°C
- Option: Lightning protection (IEC 61000-4-5), 10kA (8/20 μs)

## Technical Data

Measuring principle	Piezoresistive	Media temperature	T3: -25°C ... +150°C T4: -25°C ... +100°C T6: -25°C ... +55°C
Measuring range	0 ... 0.1 to 0 ... 1000 bar	Ambient temperature	T3/T4: -25°C ... +85°C T6: -25°C ... +55°C
Output signal	4 ... 20 mA	Approval / conformity	GL, KRS

02/2017

Data sheet H72227i

Subject to change

## Ordering information/type code

		XXXX	XX	XX	XX	XX	XX	XX	
<b>Custom build code</b>	Relative pressure	8852							
	Absolute pressure	8853							
<b>Measuring range <sup>1)</sup></b>	<b>Pressure measurement range [bar]</b>	<b>Over pressure [bar]</b>	<b>Burst pressure [bar]</b>		<b>Pressure measurement range [bar]</b>	<b>Over pressure [bar]</b>	<b>Burst pressure [bar]</b>		
	0 ... 0.1	3	200	66	0 ... 16	48	200	79	
	0 ... 0.16	3	200	67	0 ... 25	75	200	80	
	0 ... 0.2	3	200	68	0 ... 40	120	850	81	
	0 ... 0.4	3	200	69	0 ... 60	180	850	82	
	0 ... 0.6	3	200	70	0 ... 100	300	850	83	
	0 ... 1	3	200	71	0 ... 160	480	850	85	
	0 ... 1.6	4.8	200	73	0 ... 250	750	850	74	
	0 ... 2.5	7.5	200	75	0 ... 400	850	850	84	
	0 ... 4	12	200	76	0 ... 600	850	850	86	
	0 ... 6	18	200	77	0 ... 1000	1500	1500	88	
	0 ... 10	30	200	78					
	<b>Sensor</b>	Type 05 (Accuracy NLH: ± 0.5 % FS)							P5
		Type 02 (Accuracy NLH: ± 0.25 % FS)							P2
Type 01 (Accuracy NLH: ± 0.1 % FS)								P1	
<b>Pressure connection</b>	G1/4" female							10	
	G1/4" male							15	
	G1/4" male (Manometer)							20	
	G1/2" male							21	
	G1/2" male, frontal membrane							31	
	G1/2" male, flush membrane							32	
	G1/2" male (Manometer)							11	
<b>Electrical connection</b>	Male electrical plug: MIL-C 26482 (Mat.: Al), IP 40							02	
	Male electrical plug: DIN43650-A, Mat.: PA, IP65							04	
	Male electrical plug: Binder 723, Mat.: Zn, IP67							14	
	Cable PUR: length ... (mm) IP67							22	
<b>Output</b>	4 ... 20 mA							19	
	4 ... 20 mA with lightning protection (Surge)							09	
<b>Accessories</b>	Female electrical connector DIN43650 A							58	
	Female electrical connector: Binder 723							37	
	Female electrical connector: MIL-C 26482, 6-pole, Metal, Zone 0,1,2 (Ga)							32	
	Special oil filling: Aseol							94	
	Special oil filling: Halocarbon							95	
	Temperature class T3							T3	
	Temperature class T4							T4	
	Temperature class T6							T6	

<sup>1)</sup> Customized pressure ranges upon request

<sup>2)</sup> Accuracy NLH see table



Identical construction with other specifications: Data sheet No. H72230

## Standard products (extra short lead time)

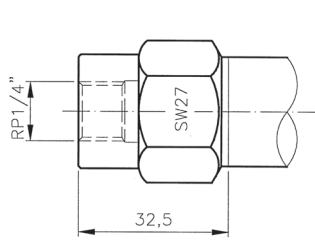
Product No.	Type Code	Pressure range [bar]	Over pressure max. [bar]	Supply [VDC]	Accuracy @ 25°C typ. [%]
EXNA0.2A	8852 68 P515 04 0000 0000 19 58 T4	0 ... 0.2	3	10 ... 30	±0.5

Specifications		
<b>Electrical Data</b>	Output / supply voltage	4 ... 20 mA / 10 ... 30 VDC
	Load	$R_L \leq (U_S - 9V) / 20 \text{ mA}$
	Rise time	typ. 1 ms/10...90 % nominal pressure
<b>Environmental conditions</b>	Media temperature	T3: -25°C ... +150°C T4: -25°C ... +100°C T6: -25°C ... +55°C
	Ambient temperature	T3/T4: -25°C ... +85°C T6: -25°C ... +55°C
	Protection <sup>1)</sup>	Min. IP65
	Humidity	Max. 95% relative
	Vibration	6g (25...2000 Hz)
	Shock	50g/ 1 ms
	<b>EMC Protection</b>	Emission
Immunity		EN/IEC 61000-6-2
<b>Mechanical Data</b>	Sensor	1.4435 (AISI316L)
	Housing / Pressure connection	1.4435 (AISI316L)
	Sealing	FKM 70 Sh
	Male electrical plug	See ordering information
	Weight	~ 220 g
	Mounting torque	25 Nm

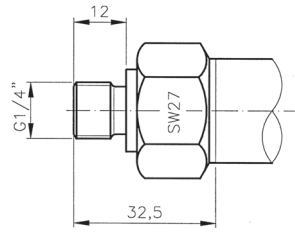
<sup>1)</sup> Provided female connector is mounted according to instructions

Accuracy						
Range	[bar]	0.1 ... 0.5	0.5 ... 2	2 ... 25	25 ... 600	> 600
Accuracy NLH (BSL through 0) <b>P5</b>	[± % FS]	0.5	0.5	0.5	0.5	0.5
Accuracy NLH (BSL through 0) <b>P2</b>	[± % FS]	0.25	0.25	0.25	0.25	0.25
Accuracy NLH (BSL through 0) <b>P1</b>	[± % FS]	-	0.1	0.1	0.1	-
Temperature coefficient zero point 0 ... +70°C	[± % FS/K]	0.06	0.03	0.015	0.015	0.015
Temperature coefficient zero point Option -25 ... +85°C	[± % FS/K]	0.08	0.04	0.02	0.02	0.02
Temperature coefficient span 0 ... +70°C	[± % FS/K]	0.015	0.015	0.015	0.015	0.015
Temperature coefficient span Option -25 ... +85°C	[± % FS/K]	0.02	0.02	0.02	0.02	0.02
Long-term drift	[1 year]	< 4 mbar	< 4 mbar	< 0.2 % FS	< 0.2 % FS	< 0.2 % FS
Repeatability	[± % FS]	0.05	0.05	0.05	0.05	0.05

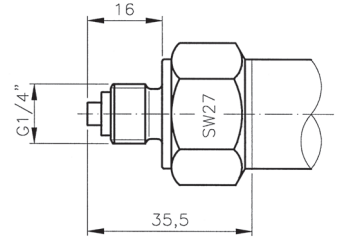
## Dimensions



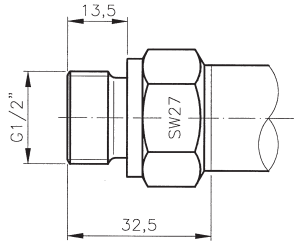
885X.XX.XX.10.XX.XX.XX



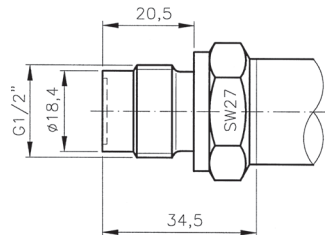
885X.XX.XX.15.XX.XX.XX



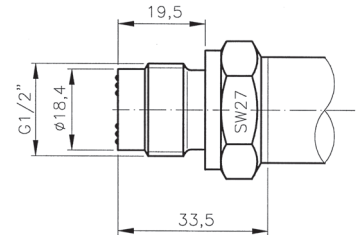
885X.XX.XX.20.XX.XX.XX



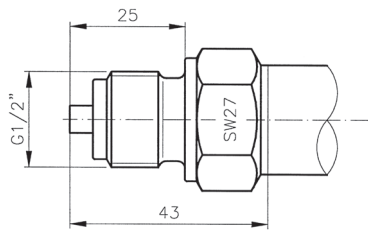
885X.XX.XX.21.XX.XX.XX



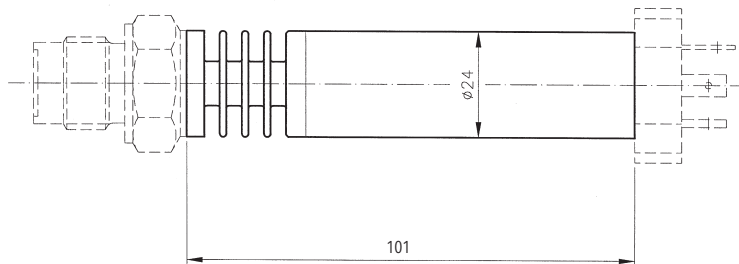
885X.XX.XX.31.XX.XX.XX



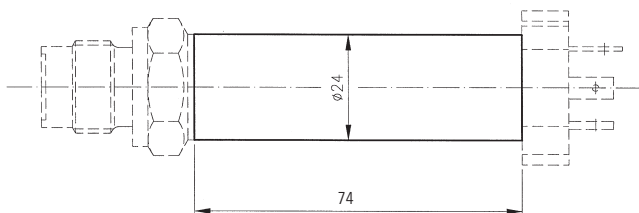
885X.XX.XX.32.XX.XX.XX



885X.XX.XX.11.XX.XX.XX



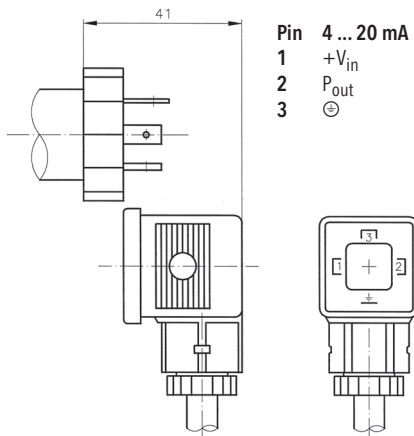
885X.XX.XX.XX.XX.XX.T3



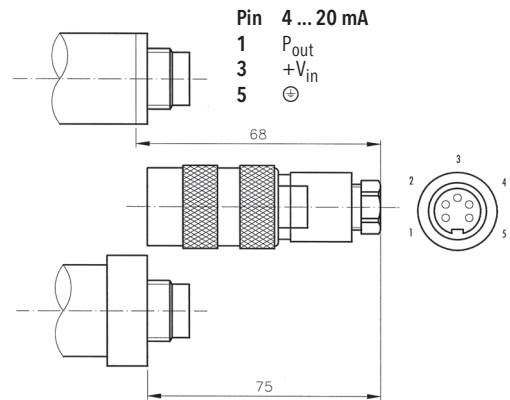
885X.XX.XX.XX.XX.XX.T4

885X.XX.XX.XX.XX.XX.T6

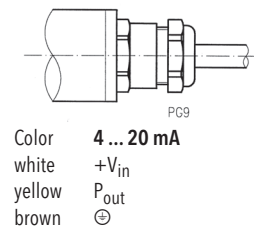
## Dimensions



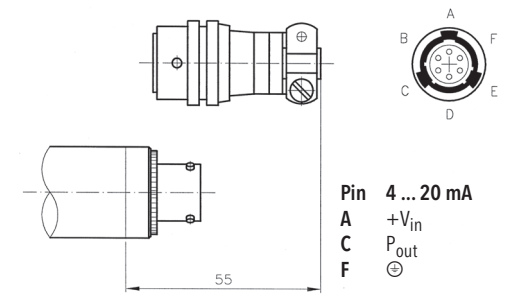
885X.XX.XX.XX.04.XX.58



885X.XX.XX.XX.14.XX.37

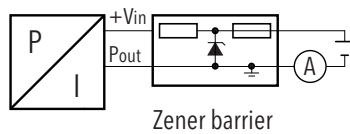


885X.XX.XX.XX.22.XX.XX



885X.XX.XX.XX.02.XX.32

## Electrical connection



### Additional information

#### Documents

Data sheet

[www.trafag.com/H72227](http://www.trafag.com/H72227)

Flyer

[www.trafag.com/H70685](http://www.trafag.com/H70685)